



# ຄະນະໂຄສະນາອົບຮົມແຂວງ

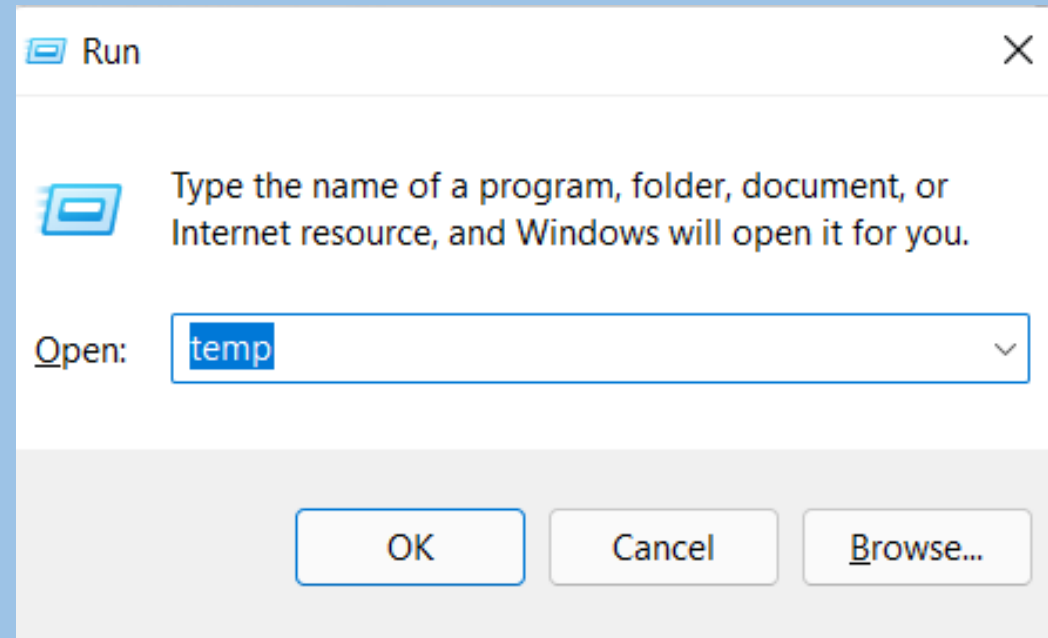


## 5 ຂັ້ນຕອນ

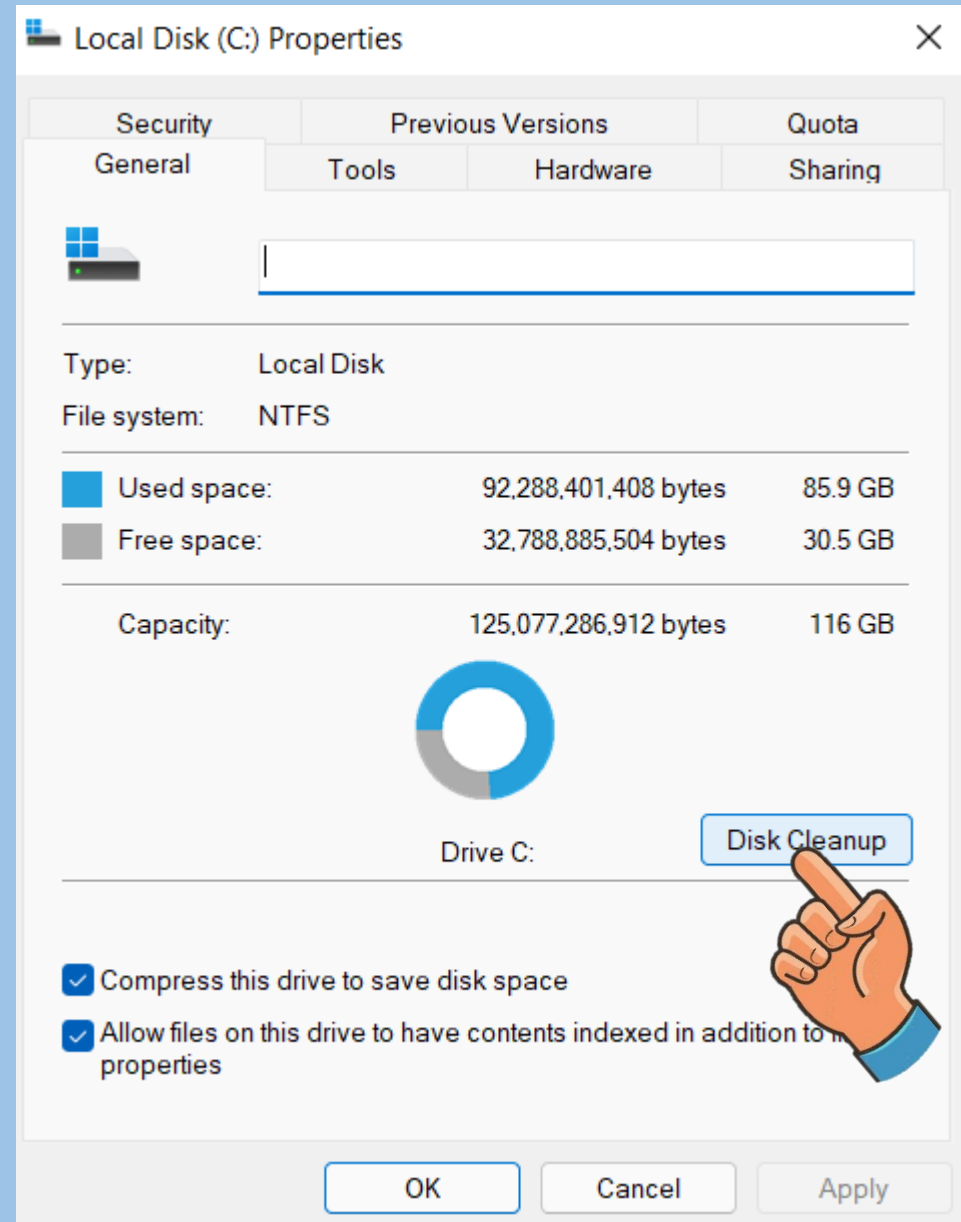
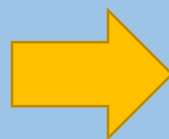
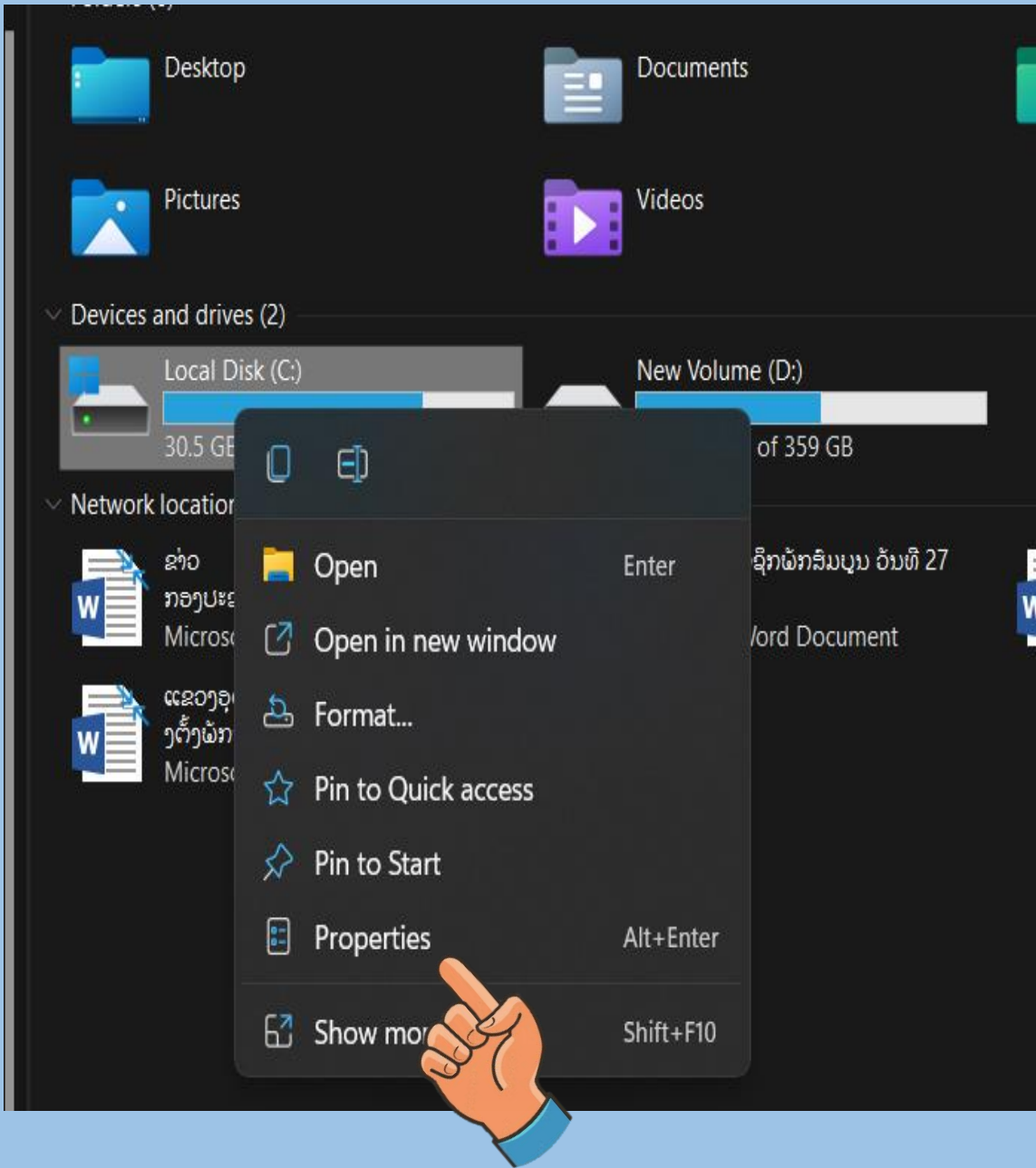
### ການບໍາລຸງຮັກສາ PC

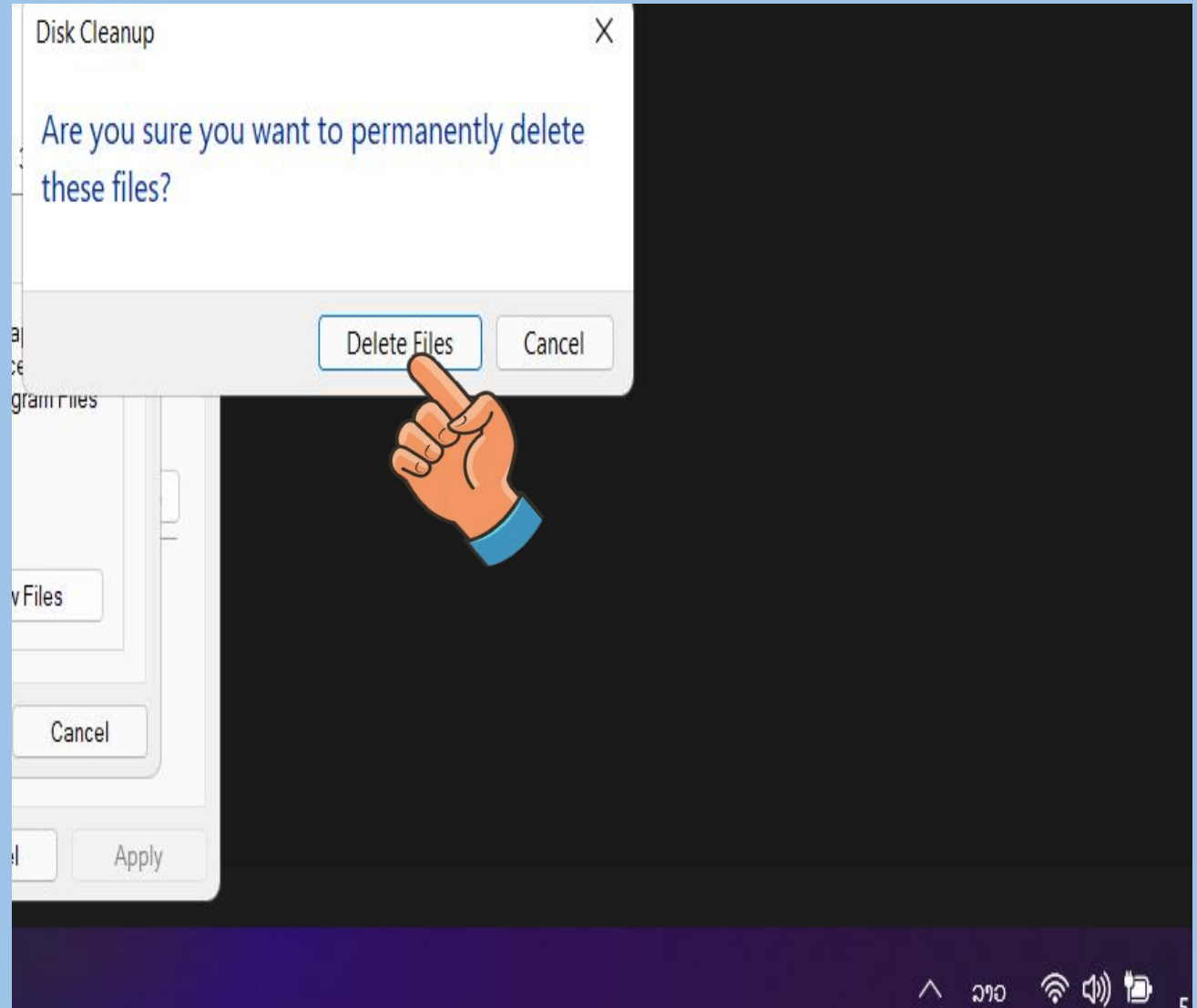
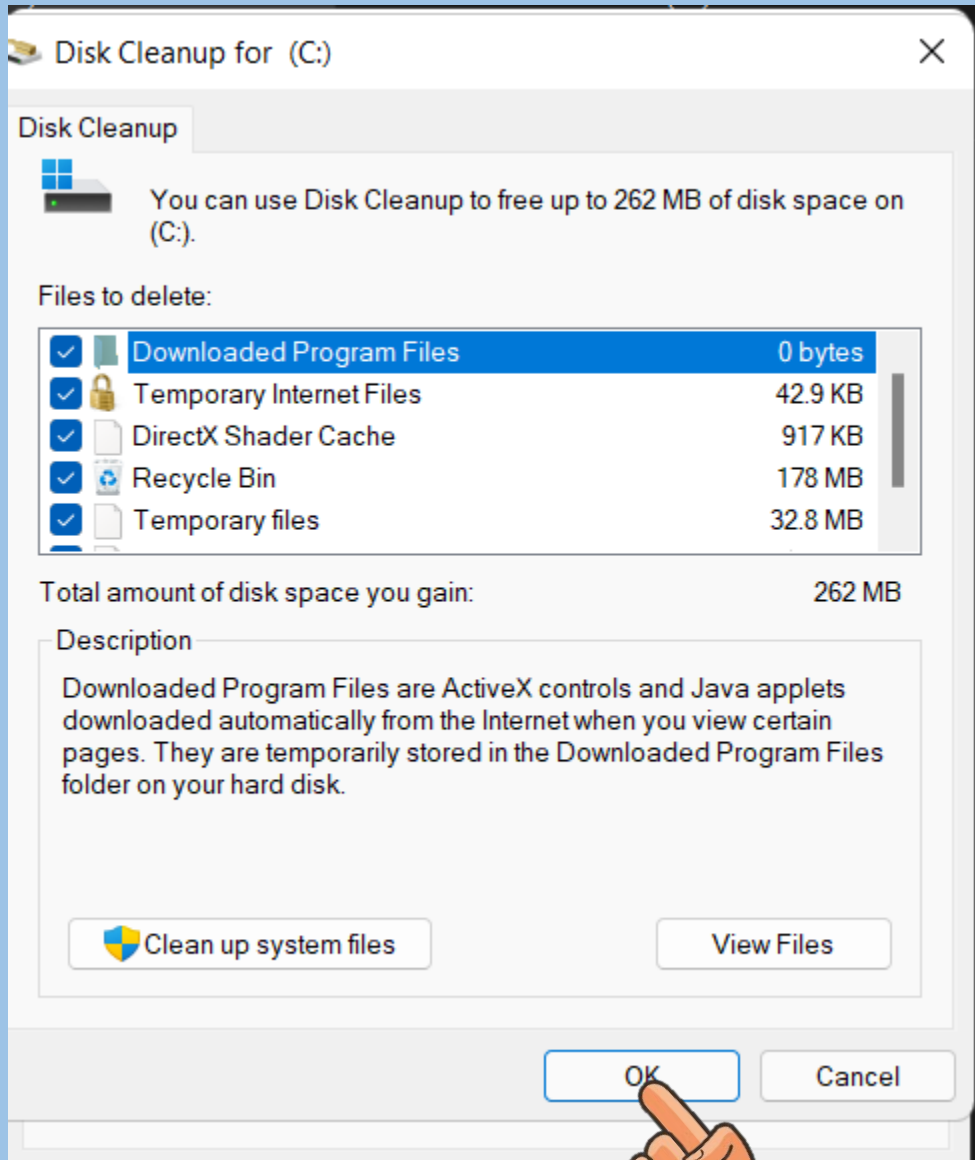
1. ຈັດການໜ້າ Desktop ໂດຍການໂຮມຟາຍ ເຂົ້າເປັນໂຟນເດີ;
2. ກົດໃສ່ຄີລັດ ປຸ່ມ window + R ແລ້ວພິມວ່າ: temp ແລ້ວ control A ລົບທັງໝົດ;
3. ພິມ %temp% ແລ້ວ control A ລົບທັງໝົດ;

4.

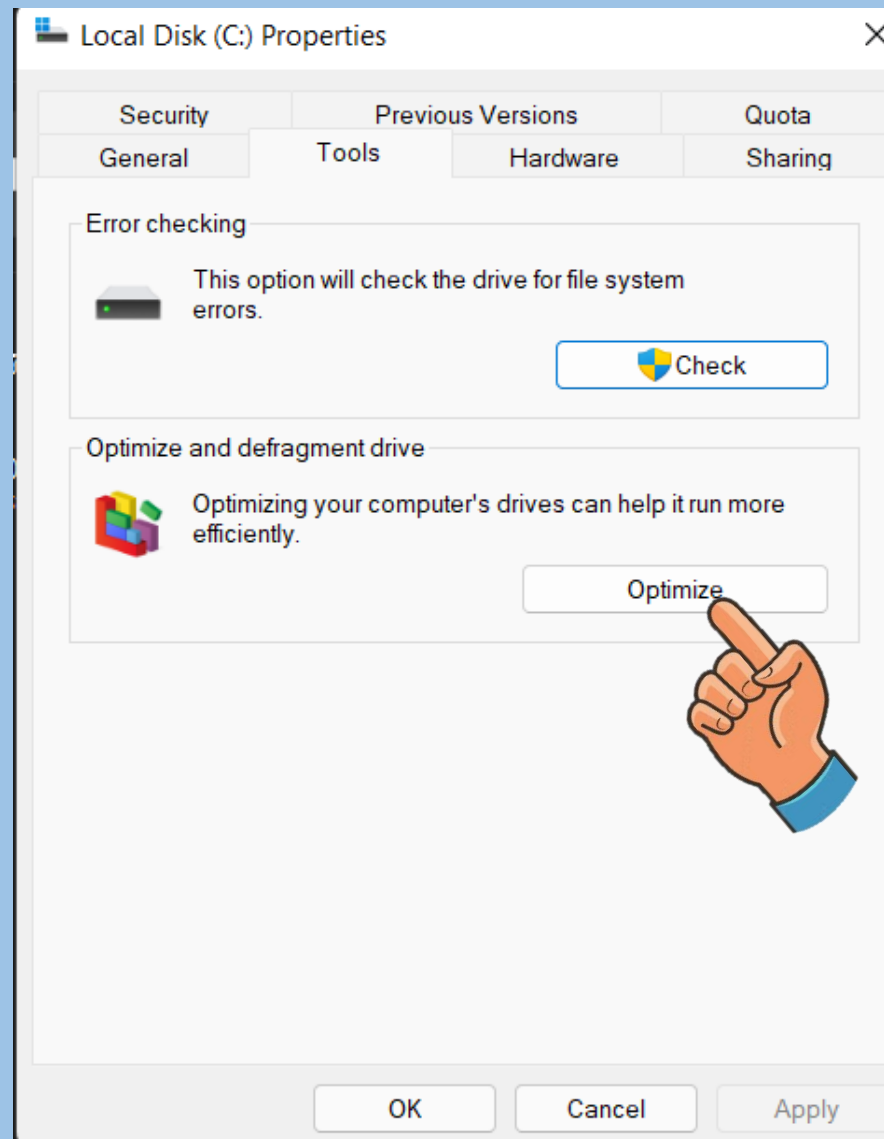
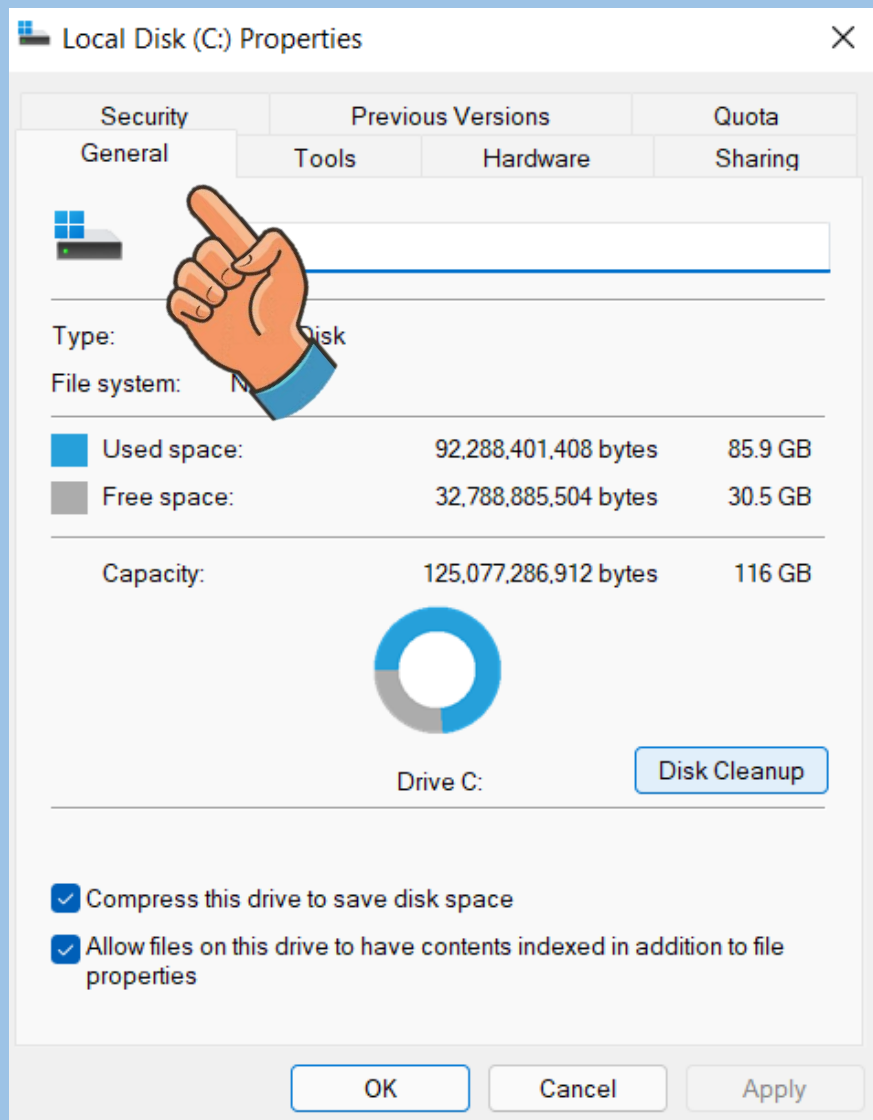


5. ມາທີ່ this PC ຫຼື my computer;





# 5 deferment (ການຈັດລຽນຂໍ້ມູນ) .



# Optimize Drives

You can optimize your drives to help your computer run more efficiently, or analyze them to find out if they need to be optimized. Only drives on or connected to your computer are shown.

## Status

| Drive           | Media type        | Last analyzed or ... | Current status                 |
|-----------------|-------------------|----------------------|--------------------------------|
| (C:)            | Solid state drive | 5/9/2024 8:12 AM     | OK (12 days since last retrim) |
| New Volume (D:) | Solid state drive | 5/9/2024 8:12 AM     | OK (12 days since last retrim) |



Advanced View

Analyze

Optimize



## Scheduled optimization

**On**

Drives are being analyzed on a scheduled cadence and optimized as needed.

Frequency: Weekly

Change settings

Close